

The Harris Group Ltd does not accept liability for any deviation to our drawings or specification. This Drawing is copyright and may not be reproduced in whole or part without written authority.

**PLANNING DRAWING**

This drawing has been prepared for submission to the relevant Local Authority as part of a Planning Application. It is not intended to assist with the pricing of any elements.

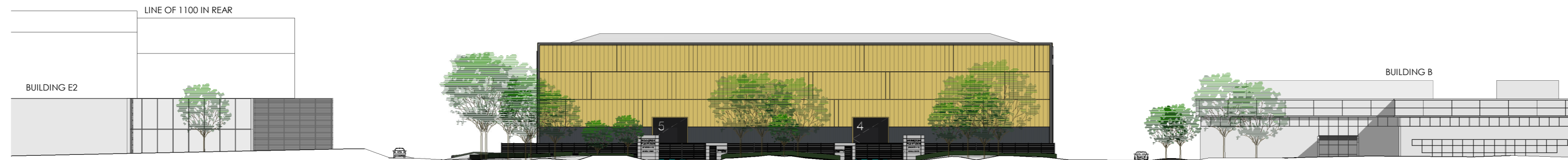
For Structural details refer to the Structural & Civil Engineers detailed design drawings & specifications.

For M&E information, refer to the M&E Engineers and sub contractor's design drawings & specifications.

For Health & Safety information, refer to the Designers Risk Assessments. This drawing is copyright and may not be reproduced in whole or part without written authority.

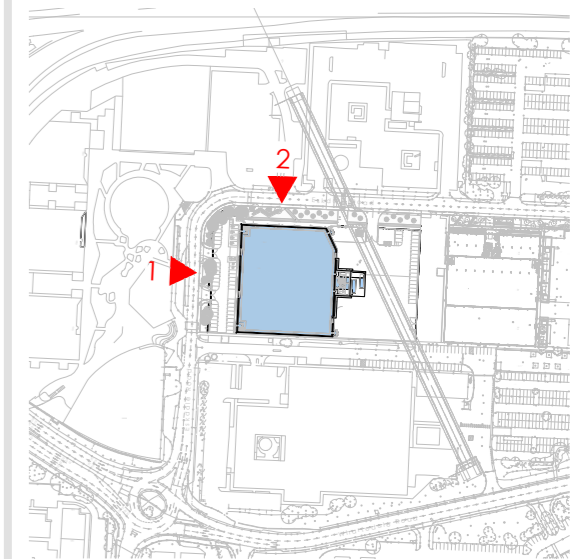
**Drawing Revisions**

Rev	Date	Description	Drawn	Chk'd By
P01	22.06.23	General notation update.	TM	OJC



**Proposed Sitewide Elevation 1 - West Facing onto Building 1000**

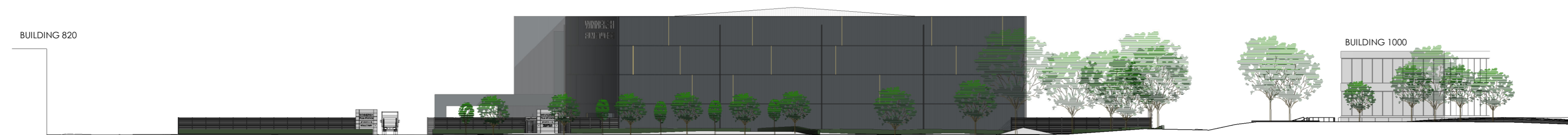
1 : 500



**SITEWIDE ELEVATION KEY PLAN**  
N.T.S.



SCALE 1 : 500



**Proposed Sitewide Elevation 2 - North Facing onto Eskdale Road**

1 : 500

**THE HARRIS PARTNERSHIP ARCHITECTS**  
www.harrispartnership.com

WAKEFIELD - T. 01924 291800  
2 St John's North, Wakefield, WF1 3GA

MANCHESTER - T. 0161 2388555  
Convens Warehouse, 77 Dale Street, Manchester, M1 2HG

MILTON KEYNES - T. 01908 211 577  
The Old Rectory, 79 High Street/Newport Pagnell, MK16 6AB

READING - T. 0118 950 7700  
101 London Road, Reading, RG1 5BY

LONDON - T. 020 7409 1215  
10 Green Court, 39 Christopher's Place, London, W1U 1JJ

Client



Project Title  
**PROPOSED BUILDING 810**  
Winnersh Triangle Business Park  
Eskdale Road, Winnersh Triangle  
Reading, RG41 5TS

Drawing Title  
**PROPOSED SITEWIDE ELEVATIONS**

Drawn	Checked	Scale @A2	Status	Date
TM	OJC	As indicated	Stage	04/23

Drawing Status	Rev.	THP Project No
PLANNING	P01	17922

Project No.	Originator	Volume	Level	Type	Role	Number
<b>17922</b>	<b>THP</b>	<b>SITE</b>	<b>EL</b>	<b>DR</b>	<b>A</b>	<b>(P)126</b>

This page is intentionally left blank